

# WHIPPET

## Wireless Warehouse Management System

### Transaction Report by owner....

Transaction by Owner

For: 1 year(s) Ordered by Timestamp Tuesday, April 10, 2001

Last Name: DWN First Name: \_\_\_\_\_  
 Department: \_\_\_\_\_ Title: \_\_\_\_\_  
 Phone Number: \_\_\_\_\_ Organisation: \_\_\_\_\_

Timestamp	Action
2001.02.19 14:21	Moved by Owner via Desk Top - barcode XXXXX - blank
2001.02.19 14:00	Moved by Owner via Desk Top - barcode XXXXX - blank
2001.01.28 15:12	Audit by Owner via Desk Top - barcode XXXXX - blank
2001.01.28 15:12	Moved by Owner via Desk Top - barcode XXXXX - blank
2001.01.23 20:21	Moved by Owner via Desk Top - no code - no description
2001.01.23 20:17	Moved by Owner via Desk Top - no code - no description
2001.01.23 19:16	Moved by Owner via Desk Top - no code - no description
2001.01.23 11:08	Moved by Owner via Desk Top - no code - no description
2001.01.23 11:08	Moved by Owner via Desk Top - no code - no description
2001.01.23 11:08	Moved by Owner via Desk Top - no code - no description
2001.01.23 11:08	Moved by Owner via Desk Top - no code - no description
2001.01.23 11:08	Moved by Owner via Desk Top - no code - no description

End Owner List Owners Preview Print Done

### Wireless RF Industrial Handheld Computers



### SageData's Mission...

**“To provide innovative and premium value inventory & warehouse software solutions that meet or exceed our customer's expectation”**

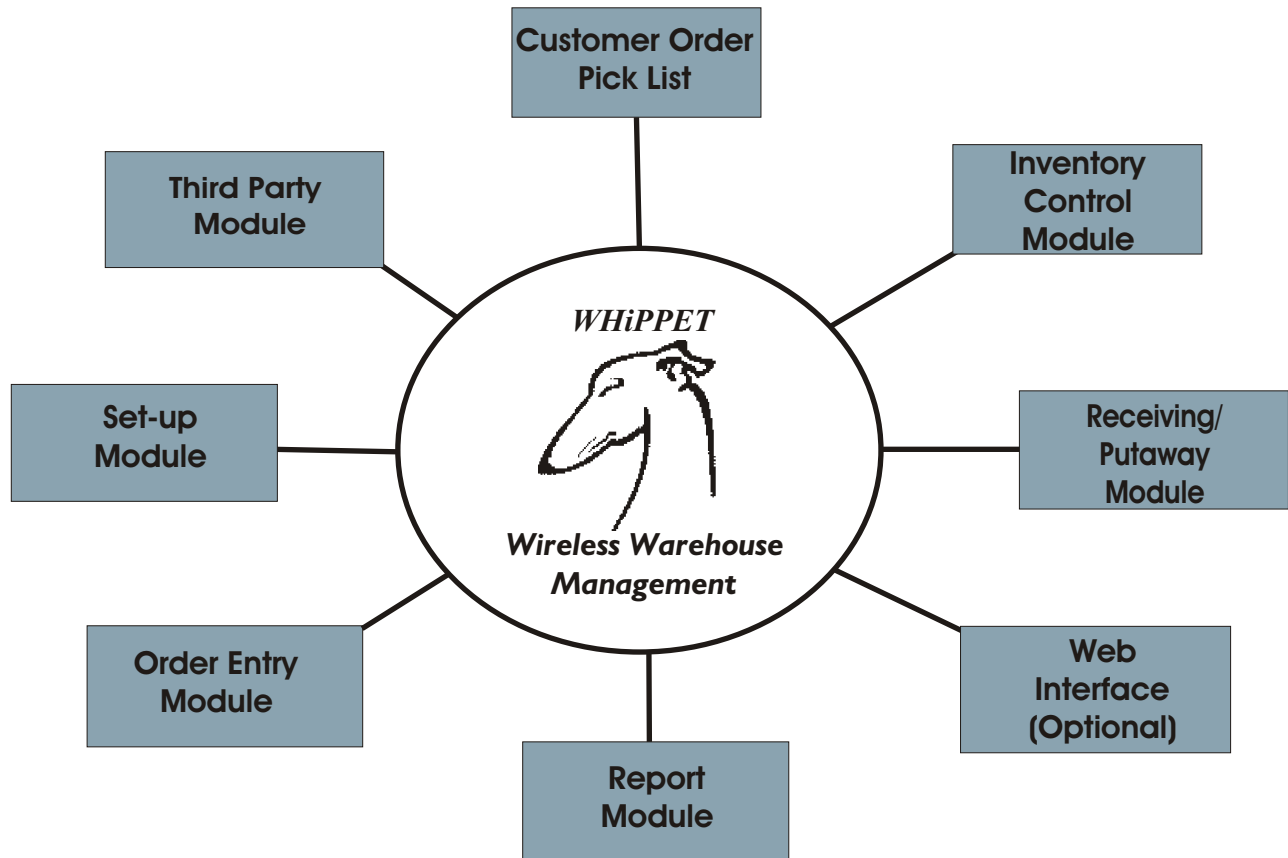
### Profile

In today's competitive environment, understanding the crucial role of a Warehouse Management System (WMS) is a vital component in differentiating your organization. Two major trends that are reshaping entire industries are; timely delivery of information and Just In Time (JIT) inventory. A flexible and reliable WMS will empower your employees to do their jobs more productively and efficiently. In turn, empowering your employees will help move your business one step further ahead of your competition.

SageData's unique and innovative warehouse management system, *WHIPPET* is a wireless system that provides real-time updates and access to your valuable data. It is designed to provide a wide array of functionality to support warehouse and distribution applications. In a time of increased demand and JIT inventory tracking becoming the norm, *WHIPPET* optimizes productivity, efficiency, and accuracy of your warehouse.

*WHIPPET* is designed to operate as a stand-alone system, or can be implemented with customized Oracle, FreeBalance, Access, Spreadsheet or SAP data interface connections. The standard built-in system interface is an ASCII File Gateway which enable file transfers (import/export) between systems.

**WHIPPET** has been designed as a multi-module program for distribution and Third Party Logistics (3PL) warehousing applications. Modules that will be available include Customer Order Pick List, Inventory Control Module, Receiving/ Putaway Module, Report Module, Order Enter Module, and Set-up Module. SageData will customize **WHIPPET** for customers who have more extensive needs. And add on modules such as a Web Browser Interface and Purchase Order Module will be available.



## Product Benefits

- Increase data accuracy up to 99.5%
- Quick handheld response promotes job satisfaction
- JIT inventory - reduce inventory and overhead costs
- Using Radio Frequency (RF) handhelds with built-in scanners will reduce the time spent on data entry
- Handheld computers will eliminate paper work and duplicate data entry
- Real-time information will enable you to view the exact levels of your inventory
- Online access to information
- Customer response and order turnaround time is improved using real-time information
- Capital costs will be reduced by making optimum use of space and resources



## Distinctive Features

**WHIPPET** has sophisticated features that will allow you to efficiently handle the process of inventory management, order fulfillment, shipping, pick lists and reports. There is a web browser interface module that is available with customization to give you real-time information about your warehouse.

### Receiving and Put-Away

Unlimited warehouse locations

Put-Away Module

Direct Put-away

Primary Storage Area

Secondary Storage Area

Transfers/Move between warehouses

Complete Quantity - will be available to allow you to set minimum levels and Recommended Order Quantity (ROQ) by location or zone

Bar Coding and Wireless RF Industrial Handheld Computers

System Security - (implemented by field levels and users)

Track by part number, description, manufacturer, minimum and maximum inventory levels

Accommodates multiple Stock Keeping Units (SKUs) for a given item

Product History

-Description of owner(s), location, cost and price

### Shipping/Order Processing

Pick List

-Contains customer information and a list of items requested

- Items requested will be in a systematic order by location

- Verification of items as they are picked

- Maintains and tracks all issues of pick lists

- Automatic bar code label generation for receiving inventory

### Reports

Standard and user-defined reports

Accounting Integration (custom)

Import/Export Capabilities

Re-order Report

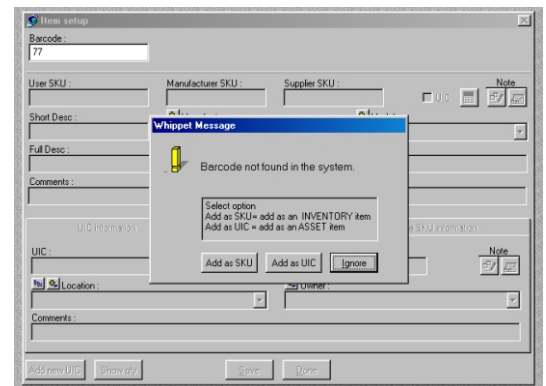
Transaction Reports (by Date, Customer, and Product)

Inventory (Audit) Discrepancy Report

Receiving inventory is quick and simple...



Entering new asset or inventory items is quick and accurate...



## Your Choice for Warehouse Management

Over the last decade, SageData has installed hundreds of inventory and warehouse management solutions, enabling organizations to improve the accuracy and efficiency of their logistics operations. SageData's powerful applications are designed to provide unparalleled wireless warehouse management for your organization's mission critical operations.